

Cargo Newsletter

May 2008

Welcome to May's edition of the EMA Cargo Newsletter, in which we will be looking at the performance of East Midlands Airport's cargo business during April, the first month of the 2008/09 financial year.

After a quiet end to the financial year 2007/08, it's back to business as usual at EMA, with nearly 2,000 dedicated cargo movements operating in the month. These movements carried 25,796 tonnes (including bellyhold freight) of flown cargo to or from East Midlands Airport. This has put the rolling twelve month throughput back up towards the 305,000 tonnes of cargo flown during the 2007 calendar year.

EMA performance:

Monthly Cargo Throughput (Last 12 months)

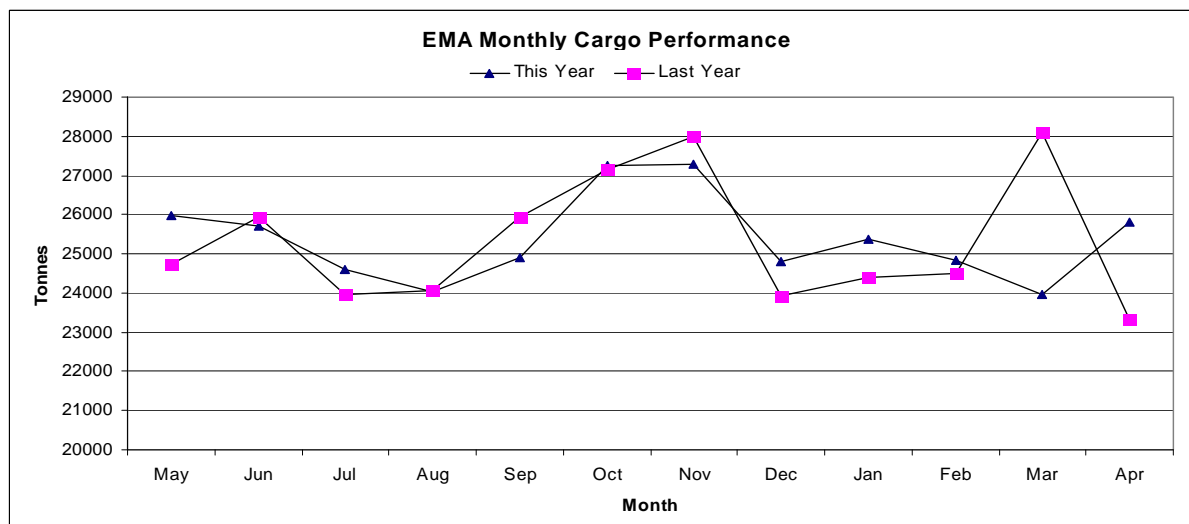
	2008/09	2007/08	Growth
May '07	25,990	24,730	2.78%
Jun '07	25,717	25,938	5.10%
Jul '07	24,597	23,976	-0.85%
Aug '07	24,035	24,057	2.59%
Sep '07	24,917	25,939	-0.09%
Oct '07	27,237	27,158	-3.94%
Nov '07	27,300	27,997	0.29%
Dec '07	24,817	23,920	-2.49%
Jan '08	25,363	24,399	3.75%
Feb '08	24,850	24,506	3.95%
Mar '08	23,978	28,094	-14.65%
Apr '08	25,796	23,311	10.66%
Total	304,596	304,025	0.19%

April '08 Imports/Exports by country

Imports (Tonnes)		Exports (Tonnes)	
3910	Germany	2720	Germany
2132	USA	2318	USA
1252	Belgium	921	Ireland
708	Italy	775	Belgium
493	Ireland	530	Spain
462	France	458	Italy
418	Ireland	378	Denmark
363	Spain	377	France
322	Denmark	329	Sweden
183	Sweden	27	Egypt

Of significance this month is the reduction in cargo being shipped to Belgium from EMA. This can be largely attributed to DHL's recent relocation of their European hub in Leipzig, down-grading their old Brussels hub to a sub-hub operation. Germany has hence seen a significant rise as numerous flights have moved to Leipzig where onward connections with DHL's worldwide network are made.

As you can see in the chart below, the cargo throughput trend is relatively consistent year on year, until March this year when an early Easter bank holiday weekend fell into March rather than April. The effects of this can be seen quite clearly, with an inverse trend through March and April 2008:



Total Pure Freight and Pure Mail (April 2008):

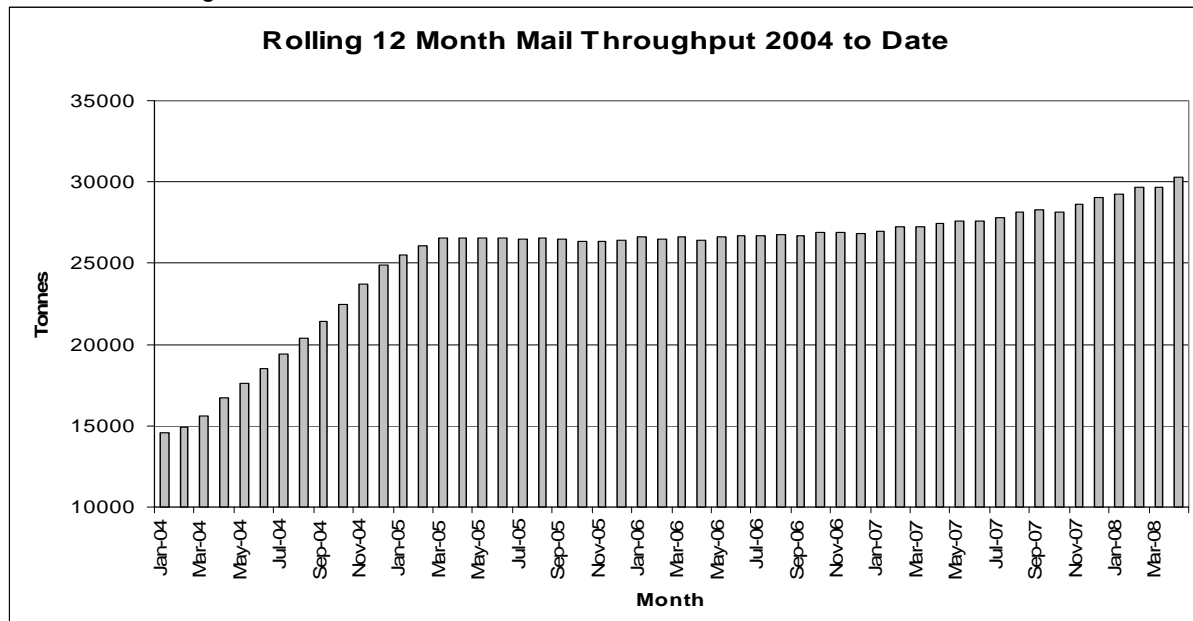
	Movements	Freight (Tonnes)	%	Mail (Tonnes)	%	Cargo (Tonnes)	%
Arrivals	970	11,836	51.66	1,233	42.87	13,069	51.68
Departures	966	11,077	48.34	1,643	57.13	12,720	49.32
Total	1,936	22,913	100	2,876	100	25,789	100

The balance between inbound and outbound cargo remains very close with only 349 tonnes the difference. Flown mail shows a more significant variation however, with 57% of total tonnes handled departing EMA.

Mail origin / destination performance (April 2008):

To EMA (Tonnes)		From EMA (Tonnes)	
416	Edinburgh	533	Edinburgh
317	Belfast	466	Belfast
143	Exeter	198	Bournemouth
142	Bournemouth	161	Exeter
108	Newcastle	117	Isle of Man
73	Isle of Man	116	Newcastle
27	Aberdeen	44	Aberdeen

Royal Mail's Edinburgh flights continue to dominate the performance table in respect of Mail shipped by air to or from EMA, with mail now approaching 3,000 tonnes flown per month. April '08 was a particularly strong month and this has helped Royal Mail to achieve a new milestone by handling over 30,000 tonnes of First Class packages within a rolling twelve month period. This equates to over 20% of all UK flown First Class mail emphasising the need for air services to ensure the exceptionally high level of service promised by Royal Mail. The following chart illustrates Royal Mail's gradual growth towards achieving the 30,000 tonne milestone:



First UK aid flights to Burma depart from EMA

East Midlands Airport played its part recently in relief efforts following the devastation of Cyclone Nargis on Burma. In response to the disaster, EMA waived all landing and parking fees. Two flights have so far departed EMA carrying 84 tonnes of supplies and emergency shelter equipment to some of the estimated one million people left homeless by the cyclone. A DC10-30F and an Ilyushin IL-76 aircraft were utilised to transport the aid supplies, and further flights are expected in the wake of the Earthquake in China.

And finally...

Congratulations to Bill Blanchard on his recent marriage to Jayne on May 17th. Bill managed to squeeze his wedding into his 40's by no less than two days as he turned 50 while on his honeymoon. I am sure the entire EMA Cargo Community wish Bill and Jayne all the very best for the future.