

EMA Cargo Newsletter

December 2008

Welcome to the December edition of the EMA Cargo Newsletter which will update you on the cargo performance at East Midlands Airport's for the months of October and November.

Once again, recession dominates the headlines, and has continued to affect the entire aviation industry. There are noticeable changes in the operations of both passenger and cargo carriers, with tonnage throughput trends dropping domestically and between many of the world's major economies and business centres. IATA recently announced that international air freight had contracted by 7.9% in October, this being the 5th consecutive month of significant global downturn. This trend is moderately evident in October, at EMA however November has been more noticeably affected as can be seen in the following table:

EMA performance:

	Freight This Year*	Freight Last Year	Change	Mail This Year	Mail Last Year	Change	Cargo This Year	Cargo Last Year	Change
Dec-07*	22,179	21,728	2.1%	2,637	2,192	20.3%	24,816	23,920	3.7%
Jan-08*	22,773	22,026	3.4%	2,590	2,373	9.1%	25,363	24,399	4.0%
Feb-08*	22,265	22,294	-0.1%	2,585	2,212	16.9%	24,850	24,506	1.4%
Mar-08*	21,486	25,602	-16.1%	2,492	2,492	0.0%	23,978	28,094	-14.7%
Apr-08*	22,970	23,729	-3.2%	2,876	2,253	27.7%	25,846	23,311	10.9%
May-08*	22,092	23,502	-6.0%	2,647	2,488	6.4%	24,739	25,990	-4.8%
Jun-08*	22,475	23,411	-4.0%	2,668	2,288	16.6%	25,143	25,699	-2.2%
Jul-08*	22,507	22,305	0.9%	2,786	2,292	21.6%	25,293	24,597	2.8%
Aug-08*	19,585	21,592	-9.3%	2,423	2,443	-0.8%	22,008	24,035	-8.4%
Sep-08*	21,705	22,567	-3.8%	2,606	2,350	10.9%	24,311	24,917	-2.4%
Oct-08*	23,781	24,914	-4.5%	2,853	2,322	22.9%	26,634	27,236	-2.2%
Nov-08*	21,803	24,384	-10.6%	2,623	2,915	-10.0%	24,427	27,299	-10.5%
Total	265,619	278,054	-4.4%	31,786	28,620	11.1%	297,405	304,003	-2.2%

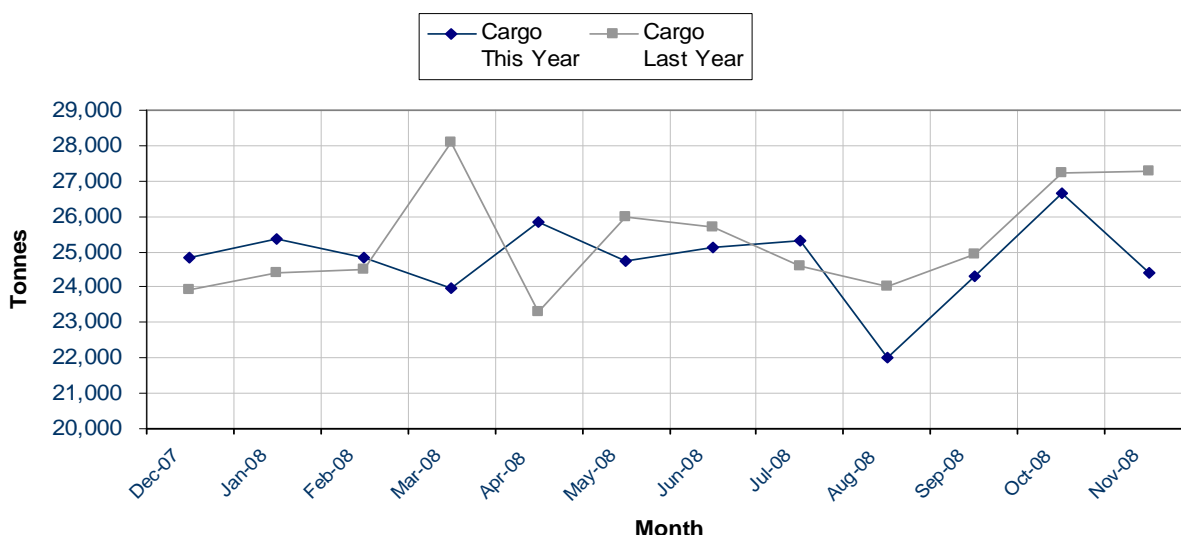
Considering the influence of recession, October was a very strong month albeit 2.2% down on the 27,236 tonnes handled last year, which coincidentally, was one of EMA's strongest performing months on record. Rolling annual throughput was 300,389 tonnes at the end of October, but November's impact brought the annual total below the 300,000 tonne mark. However the rolling annual totals illustrate the resilience of the EMA Cargo Community, as to date we remain only 2.2% below last year's performance.

More specifically, freight continues to perform around the 22,000 tonne region while last year these monthly totals were closer to 23,000 – 24,000 tonnes. On the positive side Mail performance this year has developed very quickly from breaking the 30,000 tonne barrier up to nearly 32,000 tonnes following the increase in Edinburgh capacity and the Newcastle operation which commenced just over a year ago. November's drop in performance in freight and mail can also be attributed at least in part to the inclusion of five full weekends in the month which reduced the number of operational days.

October '08 Imports/Exports by Country			
Imports (Tonnes)		Exports (Tonnes)	
3,854	Germany	3,121	Germany
2,167	USA	2,455	USA
1,323	Belgium	838	Ireland
743	Italy	813	Belgium
631	France	573	Spain
553	Iceland	425	Denmark
416	Ireland	424	Italy
334	Denmark	340	Kenya
186	Spain	324	France
104	Sweden	172	Sweden

November '08 Imports/Exports by Country			
Imports (Tonnes)		Exports (Tonnes)	
3,871	Germany	2,836	Germany
1,727	USA	2,316	USA
1,079	Belgium	852	Ireland
591	Italy	735	Belgium
485	Ireland	516	Spain
465	Iceland	421	Italy
365	France	391	Denmark
354	Denmark	291	France
213	Spain	172	Sweden
86	Sweden	78	Iceland

EMA Rolling Monthly Cargo Performance



Total Pure Freight and Pure Mail October 2008 (excludes belly-hold freight):

	Movements	Freight (Tonnes)	%	Mail (Tonnes)	%	Cargo (Tonnes)	%
Inbound	1,011	11,859	49.87	1,329	46.58	13,188	49.52
Outbound	1,014	11,922	50.13	1,524	53.42	13,446	50.48
Total	2,025	23,781	100	2,853	100	26,634	100

Total Pure Freight and Pure Mail November 2008 (excludes belly-hold freight):

	Movements	Freight (Tonnes)	%	Mail (Tonnes)	%	Cargo (Tonnes)	%
Inbound	957	10,734	49.63	1,193	45.48	11,927	48.83
Outbound	971	11,067	50.37	1,430	54.52	12,497	51.17
Total	1,928	21,801	100	2,623	100	24,424	100

Immediately apparent in the tables above is the drop in movement numbers between October and November, affected by the number of non-business days in November. Although performance is down on last year it remains generally in line with the historical pattern seen at EMA.

Mail performance was again exceptional in October, up 22.9% on the same month last year, however November was down 10% compared to a very strong November 2007 performance which saw nearly 3,000 tonnes of flown mail handled at EMA. October '08 was the last month to benefit from the step changes in mail volumes arising from the new service to Newcastle and additional Edinburgh services, so November's performance was expected to some extent. The January to November period has now exceeded the total mail carried in 2007 with December remaining to boost the 2008 total.

Mail Origin / Destination Performance:

August 2008			
To EMA (Tonnes)		From EMA (Tonnes)	
433	Edinburgh	525	Edinburgh
371	Belfast	491	Belfast
160	Exeter	175	Exeter
143	Bournemouth	134	Isle of Man
117	Newcastle	119	Newcastle
73	Isle of Man	59	Aberdeen
26	Aberdeen	21	Bournemouth

September 2008			
To EMA (Tonnes)		From EMA (Tonnes)	
392	Edinburgh	511	Edinburgh
313	Belfast	452	Belfast
148	Exeter	167	Exeter
132	Bournemouth	129	Isle of Man
113	Newcastle	123	Newcastle
71	Isle of Man	25	Aberdeen
24	Aberdeen	23	Bournemouth

Cargo and Passenger Business News:

bmi baby have gone on sale with the first scheduled services to Mahon from EMA, and also recently announced Almeria on the Southern coast of Spain. For details of flights please visit www.bmibaby.com

easyJet have added Nice to their portfolio from East Midlands Airport, with 3 weekly flights to and from the popular French destination. For further details please visit www.easyJet.com

Work has now commenced on the extension of the Arrivals / Transport Interchange area, where we are extending the existing terminal building in order to ensure the arrivals experience is as comfortable and easy as possible for both passenger and meeter / greeter. The project is due for completion in February 2009.

Finally, we wish you all a very Merry Christmas and a prosperous 2009